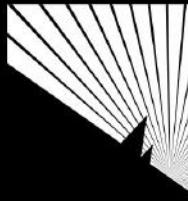


MFMG

www.mackillopgroup.com.au



Mackillop Farm Management Group Inc

NEWSLETTER

June 2012



South East Prime Livestock Achievers



"Profiting from Prime Livestock Production"

What's in the newsletter?

- Trent Potter's 41 years in Agricultural research
- SEPLA matters
- Report from SEPLA forum
- Free Benchmarking service
- GRDC updates and MFMG AGM
- Irrigating in 2012
- 2011 / 12 MFMG Management Committee
- Sponsor information and acknowledgements
- Precision Ag Demo and Information Day
- AWI Seminar in Naracoorte
- Making Better Nitrogen Decisions
- Managing Carbon in Livestock Systems

Important Dates in July and August

17th July	Precision Ag Demo and Information Day
24th July	Knowing your Soil and Water Quality and Crop Requirements
3rd August	Golf Day and Dinner in Trent Potter's honour
7th August	Understanding your Irrigation System – Pivots
14th August	Understanding your Irrigation System – Surface/Flood Irrigation
17th August	AWI Seminar and SEPLA AGM
29th August	GRDC Updates and MFMG AGM

Information on all above events can be found in this newsletter



2012 Members and Sponsors Event

THE MACKILLOP FARM MANAGEMENT GROUP INVITES YOU TO AN EVENT TO HONOUR

TRENT POTTER'S FORTY ONE YEARS IN AGRICULTURAL RESEARCH



3RD AUGUST 2012 AT NARACORTE
GOLF CLUB FOR GOLF & / OR DINNER

GOLF

Shot gun start – 2pm Ambrose
Competition – Teams of 4 or
individual entries welcome
\$10 per player – (Clubs for hire)

DINNER & RECOLLECTIONS

From 6.30pm at the Clubhouse
All welcome – \$25 per person

RS VP BY 27TH JULY 2012

Krysteen McElroy
mfm@bigpond.com – 0408 655 108

Bar facilities available
(Drinks at your own cost)



Invitations for this event will be forward in the near future—we welcome all those that have been involved with Trent over the years to come along and celebrate Trent's achievements.

A word from Trent: I am not retiring!!!

Sponsor Acknowledgements

The MacKillop Group would like to take this opportunity to thank all of our valued sponsors for their on-going support. It is always much appreciated and essential to the functioning of the group.

We would like to also to acknowledge the support of the following who have been sponsors for a number of years



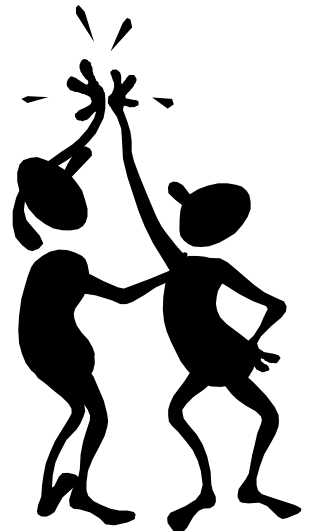
Landmark (2003)

National Australia Bank (2004)

Viterra (and previous identities) 2005

Commonwealth Bank and Riverland Oilseeds (2007)

Murray Nankivell & Assoc (2008)



SEPLA Matters!

SEPLA Matters – well, of course it does (at least to those who have been with the group for a long time!), but there are a couple of critical issues at the moment for this, the livestock section of the MacKillop Farm Management Group.

1. The first is that of a new Chairperson for the group.

This has been an ongoing issue since our AGM last August when we did not receive any nominations for the position of Deputy Chair, who would then go on to become chair at this year's AGM. Since that time I have canvassed many of the current committee plus a few other members but have clearly not been convincing enough in my sales pitch!

As a consequence the current committee has recently discussed making the committee less formal in the future. This would mean that we would dispense with the position of SEPLA Chairperson but maintain the rest of the committee structure.

The main role that the Chair has been filling, other than running committee meetings, is that of SEPLA representative on the MFMG management committee and this could in future be filled on a rotation basis from the SEPLA committee.

The rest of the running of the committee would stay as it is, with the MFMG Executive Officer calling and organising meetings and the meetings being chaired on a rotation basis from within the committee.

The major impact this would have is that there would be one less good excuse for any of you to join the SEPLA committee! I would appreciate some feedback on this proposal in time for this year's AGM.

2. The second is that of committee membership.

If we act on the above proposal there would be no real formal responsibilities and maybe only one extra meeting per year (i.e. a MFMG committee meeting) to attend it is time **you** considered joining the SEPLA committee. We are on the look out for new blood into the committee, so "*please consider*" and **nominate for the committee now**. At this stage it is likely that we will hold our AGM following the AWI WoolClip seminar on Friday August 17, so make sure you come along.

As for other livestock issues of relevance – it would be great if we could get some decent rain so we can all stop feeding, our ewes can get a decent feed and we can produce the beef, lambs and wool of the quality and consistency that we all strive for.....

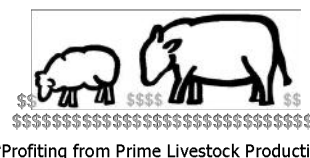
Regards,

Nick Edwards

Retiring SEPLA Chair



South East Prime Livestock Achievers



Report from SEPLA Pasture Forum



The current situation for livestock producer is a positive one, according to John Francis from Holmes Sackett. He commented that in comparison to the previous 14 years it has never been more profitable to be a livestock producer.

John was just one of the excellent speakers on the line up at this year's biannual pasture forum held on the 28th February.

With the forum aiming to present information on making more money out of perennial pastures through carbon, benchmarking and

matching pastures to soils the 80 attendees were provided with plenty of new, interesting and thought provoking information.

The quality and enthusiasm of speakers for their topic material ensured the success of the day, with positive feedback indicating the majority of attendees found the information relevant and useful to their businesses. In addition to hearing from John Francis, we also heard from Janelle Edwards about benchmarking and the comparative profitability of livestock enterprises.

Lysandra Slocombe, DPI Victoria, provided an understanding of some of the current projects that are aiming to reduce methane emissions in livestock.

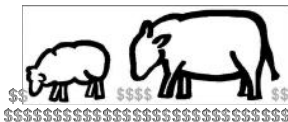
While Kate Sargeant, DPI Victoria, provided valuable information regarding planning and implementing successful pasture renovation programs, particularly focused on perennials.

To round off the day, attendees visited a nearby property to look at and discuss pastures, soils and management systems.

The day was presented by SEPLAs, MFMG and Grasslands Society of Southern Australia and supported by funding from the Australian Government Department of Agriculture, Fisheries and Forestry under FarmReady, part of Australia's Farming Future, Meat and Livestock Australia, SheepConnect South Australia and South East Natural Resource Management Board.

Report provided by Penny Craig.

South East Prime Livestock Achievers



"Profiting from Prime Livestock Production"



Managing Carbon in Livestock Systems

Provided by Nick Edwards

A recent computer modelling study by SARDI researcher, Dr Nick Edwards has shown that there are options for livestock producers to reduce their greenhouse gas emissions (GHG) while maintaining or increasing productivity.

Emissions from agriculture comprise up to 16% of Australia's total GHG emissions. Of these emissions, 72% come directly from methane burped by ruminant livestock – your sheep and cattle – with the remainder coming from nitrous oxide released from underutilised fertiliser, methane from feedlot and other animal wastes, methane and nitrous oxide from stubble and savanna burning, and methane from rice cultivation. Although the emerging area of carbon farming, Carbon Farming Initiatives, Carbon Offsets, etc look complex (and they are!), the important factor is that there are currently no plans by the Federal Government to put a carbon price on the agricultural GHGs you produce. There may, however be opportunities for you to obtain carbon credits by reducing emissions and/or sequestering carbon on your farms.

As part of a project funded by SARDI and the Australian Government's Climate Change Research Program, we investigated GHG emissions and emissions intensity of pasture-fed beef production systems in the South East of South Australia by computer simulation modelling.

Using the SGS Pasture Model the GHG emissions intensity of self-replacing beef breeder operations were estimated at 16.3 to 18.6 tonnes of carbon dioxide equivalents (CO₂e) per tonne of calf carcass weight produced, mostly from methane. Through adoption of rotational rather than continuous grazing and making full use of the production potential of the animals in this system it was possible to reduce total GHG emissions from breeder operations by about 12% while also increasing total calf carcass weight produced. Simulated trader/finisher cattle systems produced GHG emissions intensities of 10.8-12.8 t CO₂e/t steer carcass weight. Reductions in GHG emissions from these operations were achieved when either growth efficiency of animals was increased (up to 5% reduction) or maintenance efficiency was decreased (up to 4% reduction). When both effects were applied concurrently there was up to a 9% reduction in total GHG emissions intensity.

Thus this modelling data indicates that grazing management and genetic selection for more efficient animals both appear to be viable means for livestock producers to reduce GHG emissions from their enterprises.

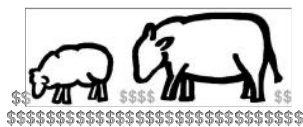
While there are currently no approved methodologies to obtain carbon credits from improved grazing management in southern livestock production systems, equally there is no downside. What you need to do is use your pasture well to match the nutritional requirements of your animals and optimise their growth. This may have side benefits of reduced methane production but you will not be able to capture those benefits as a carbon credit at the moment.

For more information go to:

www.climatechange.gov.au/en/government/initiatives/carbon-farming-initiative/handbook.aspx

http://www.daff.gov.au/__data/assets/pdf_file/0006/1950783/cfi-fact-sheet.pdf

South East Prime Livestock Achievers



"Profiting from Prime Livestock Production"

MFMG

www.mackillopgroup.com.au



MacKillop Farm Management Group Inc

Linking Limestone Coast Primary Producers

seedmark

better seeds, better choices

nab agribusiness

Elders

GLEN CARRON

Beachport SA
BULK HAULAGE SOLUTIONS

Nufarm

PACIFIC SEEDS

AUSTRALIA'S HYBRID CANOLA SPECIALISTS

LANDMARK

look to us

VITERRA™

syngenta

Naracoorte Agricultural services

SEARCH OUR KNOWLEDGE

Commonwealth Bank

Regional and Agribusiness Banking

s sturt grain

GrainCorp

BAYER

RIVERLAND

Oilseeds

JOHN DEERE Wickham Flower

Canola Breeders

CBH Grain

1800 107 709

Cox Rural

MGA

INSURANCE BROKERS

WE WORK FOR YOU!

Seednet

Planting Productivity

Naracoorte Seeds

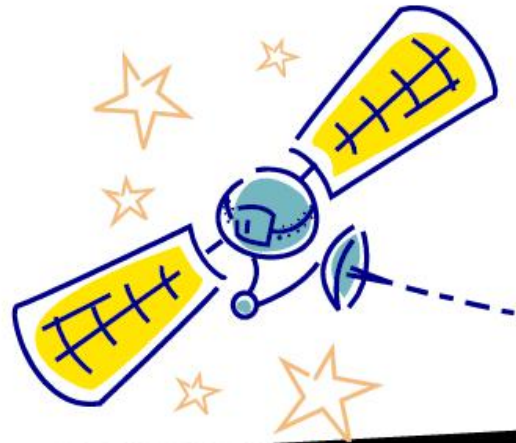
Keeping Seed Simple

MURRAY NANKIVELL

ACCOUNTANTS & BUSINESS CONSULTANTS

"SERVICE IS OUR STRENGTH"

Tuesday
17th July 2012
10am – 3pm
Naracoorte
Showgrounds



- Equipment and Trade Displays
- Come and Test drive precision ag equipped machinery
- Various presentations on PA related topics
- Keynote speaker – Dave Lamb from UNE

www.mackillopgroup.com.au
for information on speakers, topics
and equipment on display

MFMG 
www.mackillopgroup.com.au
MacKillop Farm Management Group Inc

**Precision Ag
Demo and
Information Day**

(free entry)

Or for further information please contact Felicity Turner
0400 299 087 or mf.turner@bigpond.com

Lunch available to purchase
(provided by Frances Primary
School)



Day being run in conjunction with

CARING
FOR
OUR
COUNTRY

